

SOLUGAP® WATER SOLUBLE SOCKET WELD SPACER RINGS AND STEELSPACE® CERTIFIED 316L STAINLESS STEEL SOCKET WELD RINGS

Provide the 1/16" (1.6 mm) minimum gap required by ANSI 31.1, Section III, ASME, US & Navy and Military Codes.



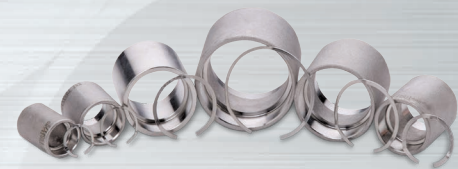
SoluGap® Water Soluble Socket Weld Spacer Rings

Made of EPA Approved Aquasol® Water Soluble Board. Dissolves completely and rapidly in most liquids. Unique tabs secure placement regardless of orientation. Compatible with any metal.

US & Foreign Patents Issued & Pending

ITEM NO.*	DIAMETER	PACKAGING
SGP-0.5	1/2"	50 pcs/bag
SGP-0.75	3/4"	50 pcs/bag
SGP-1.0	1"	50 pcs/bag
SGP-1.25	1 1/4"	50 pcs/bag
SGP-1.5	1 1/2"	50 pcs/bag
SGP-1.75	1 3/4"	50 pcs/bag
SGP-2.0	2"	50 pcs/bag
SGP-2.5	2 1/2"	50 pcs/bag

*Also available in 1/8" thickness



SteelSpace® Socket Weld Rings

Traditionally designed and manufactured with Certified 316L stainless steel. Secures in place with spring tension and remains a permanent part of the joint.

ITEM NO.	DIAMETER	PACKAGING
STS-0.375	3/8"	25 pcs/bag
STS-0.5	1/2"	25 pcs/bag
STS-0.75	3/4"	25 pcs/bag
STS-1.0	1"	25 pcs/bag
STS-1.25	1 1/4"	25 pcs/bag
STS-1.5	1 1/2"	25 pcs/bag
STS-2.0	2"	25 pcs/bag

SPACERS



SoluShim® Water Soluble Alignment Sticks

SoluShim® Water Soluble Alignment Sticks provide and maintain a consistent and precise minimum gap between plates, flanges and pipes. Made of EPA Approved Aquasol® Water Soluble Board. Compatible with any metal.

ITEM NO.	THICKNESS	DIMENSIONS	PACKAGING
SS-2-38-132	1/32"	3/8" x 2"	100 pcs/bag
SS-2-38-16	1/16"	3/8" x 2"	100 pcs/bag
SS-2-38-332	3/32"	3/8" x 2"	100 pcs/bag
SS-2-38-18	1/8"	3/8" x 2"	100 pcs/bag
SS-4-38-132	1/32"	3/8" x 4"	50 pcs/bag
SS-4-38-16	1/16"	3/8" x 4"	50 pcs/bag
SS-4-38-332	3/32"	3/8" x 4"	50 pcs/bag
SS-4-38-18	1/8"	3/8" x 4"	50 pcs/bag

For additional product information, quotations and ordering, please contact:



Dissolvo LLC
 80 Thompson Street, N. Tonawanda, NY 14120 USA
 Toll Free: 1.877.823.3388
 Phone: 716.564.8888
 Fax: 716.564.8889
 Email: info@dissolvo.com
 dissolvo.com

DIS.B5.1015.R1

Distributed By:



MADE IN THE USA



DISSOLVO®

PURGE DAM MATERIALS

Water Soluble Purge Dam Materials

Dissolvo® Water Soluble Paper and Tape are available in a wide range of grades and sizes permitting the construction of purge dams for literally any pipe diameter. It is made of Sodium Carboxy Methyl Cellulose and wooden pulp that dissolves rapidly and completely in most liquids. After welding is complete, Dissolvo® purge dams can be effortlessly dissolved and flushed out of the system with water when hydro testing; leaving no residue in the pipeline.

MADE IN THE USA



EZ Purge®

EZ Purge® is a pre-formed, self-adhesive, water soluble purge dam that enables welders to save time on weld preparation as well as improve project timeliness. Since EZ Purge® is pre-formed; there is no need to measure, cut or construct a purge dam. Setup and installation time is completed in minutes, making EZ Purge® the most efficient and economical purge dam available.

US & Foreign Patents Issued & Pending

ITEM NO.	SIZE	CASE QTY
EZP-2	2"	192
EZP-3	3"	192
EZP-4	4"	48
EZP-5	5"	48
EZP-6	6"	48
EZP-8	8"	48
EZP-10	10"	48
EZP-12	12"	48
EZP-14	14"	24
EZP-16	16"	24
EZP-18	18"	24
EZP-20	20"	24
EZP-22	22"	24
EZP-24	24"	24
EZP-26	26"	24
EZP-28	28"	24
EZP-30	30"	24
EZP-32	32"	24
EZP-36	36"	24

Sizes 40"-84" and Custom Sizes Available Upon Request



Dissolvo® Water Soluble Paper

Dissolvo® Paper can be formed into any size purge dam when used in conjunction with water soluble tape. Position minimum of 6"- 8" from root gap. Use heavyweight paper (ASW 60) for pipes having an inside diameter of 4" or greater.

ITEM NO.	DESCRIPTION	DIMENSIONS	TYPE	CASE QTY
D01S	WLD35	8 1/2" x 11"	Sheet	1000 sheets/case
D02S	WLD35	8 1/2" x 14"	Sheet	1000 sheets/case
D03S	WLD35	17" x 22"	Sheet	500 sheets/ream
DW209165	WLD35	9' x 165'	Roll	4 rolls/case
DW215165	WLD35	15 1/2" x 165'	Roll	4 rolls/case
DWAC320	WLD40C	20 1/2" x 165'	Roll	4 rolls/case
DW615022	WLD60	15 1/2" x 22"	Sheet	250 sheets/ream
DW615165	WLD60	15 1/2" x 165'	Roll	4 rolls/case
DW631165	WLD60	31" x 165'	Roll	4 rolls/case

Dissolvo® Water Soluble Tape



A pressure sensitive water soluble tape recommended to hold purge dams in position, and when needed to splice two or more pieces of Dissolvo® paper together. Sold in rolls.

ITEM NO.	DIMENSIONS	TYPE	CASE QTY
DW14K	1" x 300'	Roll	24
DW10K	2" x 300'	Roll	12



PURGE GAS RETAINING TAPE

EZ Zone® Tape

EZ Zone® Tape is a purge gas retaining tape used to seal the root gap between pipes to trap argon gas. Composed of two adhesive sections separated by an adhesive-free center zone. The adhesive portion of the tape never comes in contact with the pipe as it is welded; creating a clean, contaminant-free weld. Halogen and chlorofluorocarbon free.

ITEM NO.	DIMENSIONS	ADHESIVE FREE ZONE	CASE QTY
EZ-ZT 2.5	2.5" x 75'	1"	18
EZ-ZT 4.0	4.0" x 75'	2"	12

US & Foreign
Patents Pending

EZ Tape®

EZ Tape® is a traditional aluminum tape that can be used for sealing the root gap while purging and sealing pipe ends for transport. Conventional uses include; sealing ducts for heating, air conditioning and refrigeration; and acting as a vapor barrier. EZ Tape® is high temperature resistant, halogen-free and conforms to irregular surfaces.



ITEM NO.	DIMENSIONS	CASE QTY
EZ-T1.0	1" x 75'	24
EZ-T2.0	2" x 75'	24

BACKING TAPE

Fiback®

Fiback® fiberglass backing tape is a heat resistant aluminum tape with a woven fiberglass center strip, designed to eliminate or reduce the need for back purging and post weld grinding. Available in **200 AMP & 600 AMP** formats.



200 AMP			600 AMP		
ITEM NO.	DIMENSIONS	CASE QTY	ITEM NO.	DIMENSIONS	CASE QTY
AFBT-2.5-200	2.5" x 82'	5	AFTB-2.5	2.5" x 41'	5
AFBT-4.0-200	4.0" x 82'	5	AFBT-4.0	4.0" x 41'	5

OXYGEN MONITOR

PRO OX®-100

PRO OX®-100 Oxygen Monitor accurately measures concentration of oxygen in purged tubing and high purity weldments with 0.01% (100 ppm) resolution.

Features: A battery powered, rechargeable, programmable, handheld digital oxygen monitor with an internal pump. The state-of-the-art device is equipped with several features including an audiovisual alarm system; easy to read high-contrast, digital LCD display; data logging capability and data output to a computer for recording history. One Year Warranty.

Kit Contents: PRO OX-100® Monitor, Sensor and Polycarbonate Carrying Case; Ultra Slim Stainless Steel Probe with Neoprene Extension Tubing for Remote Monitoring, Rechargeable Battery & Charging Dock, Phillips Head Screwdriver, USB Cable, Manual and Quick Instructions.



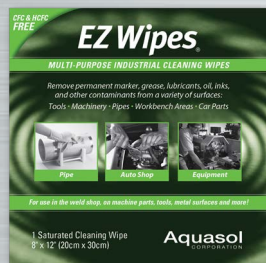
100 PPM
CE APPROVED

ITEM NO.	DIMENSIONS	WEIGHT	ITEM NO.	DIMENSIONS	WEIGHT
P-OX KIT	11" x 9" x 4"	4.00 lb	P-OX Charger/US	3" x 2" x 1"	0.10 lb
P-OX Kit Euro	11" x 9" x 4"	4.00 lb	P-OX Charger/EU	3" x 2" x 1"	0.10 lb
P-OX Sensor	1" x 1"	0.03 lb	P-OX USB	4" x 4" x 1"	0.11 lb
P-OX Batt	2" x 1" x 1"	0.12 lb			

CLEANING WIPES

EZ Wipes®

EZ Wipes® are multi-purpose, saturated, abrasive cleaning wipes that remove oil, dirt, grease, marker, some adhesives & loose particles from a variety of surfaces. EZ Wipes® are ideal for cleaning industrial work surfaces, tools, machinery and especially pipes, where contamination can severely impact the quality of the weld. EZ Wipes® feature a specialized two-sided cleaning fabric, an abrasive side to loosen dried-on surface contaminants and a smooth side to reveal a cleaner, polished surface.



ITEM NO.	DIMENSIONS	CASE QTY
EZW-ONE	8" x 12"	500

INFLATABLE BLADDERS



US & Foreign
Patents Issued
& Pending

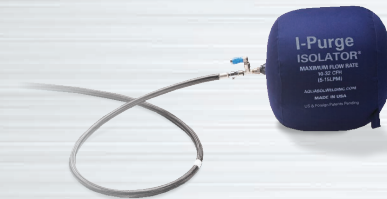
I-Purge®

I-Purge® Modular Inflatable Bladder System is the only CE approved and modular system for pipe purging. The patent-pending I-Purge® comes equipped with:

- Quick Connect Interchangeable Fittings for Rapid Assembly and Replacement
- A Kink Free, High Heat Harness Available In Extended Lengths to Accommodate Pre-heating and High Heat Applications
- Inert Gas Diffuser to Reduce Turbulence of Gas Flow within the Weld Zone

I-Purge® Isolator

I-Purge® Isolator is an inflatable pipe stopper and single purge bladder. Accommodates a wide range of applications including pipe system servicing, cleaning, inspection and sealing. Available in sizes 2" - 48" (51-1219 mm) with 10' hose and valve.



I-Purge® X

I-Purge® X Modular Expandable Bladder System is a revolutionary, versatile design, equipped with the same features of the standard I-Purge® but offers the advantage of expanding to multiple sizes with a single unit. The proprietary **Bladder Expansion Technology (BET)** assures an airtight seal is maintained for multiple inflation dimensions, resulting in a high quality weld, free of oxidation, every time!



US & Foreign Patents
Issued & Pending

I-Purge® X Bladder System (Sold as a Complete System)

ITEM NO.	DIAMETER MINIMUM	DIAMETER MAXIMUM	STD. HARNESS LENGTH
XABLD 2-3	2"	3"	11"
XABLD 4-6	4"	6"	11"
XABLD 8-12	8"	12"	11"
XABLD 14-18	14"	18"	12"
XABLD 20-26	20"	26"	16"
XABLD 28-36	28"	36"	20"
XABLD 38-48	38"	48"	24"

Custom Sizes Available Upon Request. Modular components (ABLD-Size MOD A and ABLD-Size MOD B) sold separately.

*Low profile relief valve. Diffuser not available.



Opti-Purge®

OPTI-PURGE® is a compact, "one-piece" design inflatable bladder system that dramatically reduces the amount of gas required for purging. Available in sizes above 48 inches (1219mm+).

I-Purge® Bladder System (Sold as a Complete System)

ITEM NO.	DIMENSIONS	STD. HARNESS LENGTH
ABLD 2"	2"	11"
ABLD 3"	3"	11"
ABLD 4"	4"	11"
ABLD 5"	5"	11"
ABLD 6"	6"	11"
ABLD 8"	8"	11"
ABLD 10"	10"	12"
ABLD 12"	12"	12"
ABLD 14"	14"	16"
ABLD 16"	16"	16"
ABLD 18"	18"	16"
ABLD 20"	20"	18"
ABLD 22"	22"	18"
ABLD 24"	24"	18"
ABLD 26"	26"	20"
ABLD 28"	28"	20"
ABLD 30"	30"	20"
ABLD 32"	32"	20"
ABLD 34"	34"	20"
ABLD 36"	36"	20"
ABLD 38"	38"	24"
ABLD 40"	40"	24"
ABLD 42"	42"	24"
ABLD 44"	44"	30"
ABLD 46"	46"	30"
ABLD 48"	48"	30"

Custom Sizes Available Upon Request. Modular components (ABLD-Size MOD A and ABLD-Size MOD B) sold separately. *Low profile relief valve. Diffuser not available.

Extended Length High Heat Harness (I-Purge, I-Purge X)

ITEM NO.	DIMENSIONS
ABLD-ELH-24	24"
ABLD-ELH-36	36"
ABLD-ELH-48	48"
ABLD-ELH-72	72"
ABLD-ELH-CUSTOM	Any Size
ABLD-CNADP	N/A